

**LOW VOLTAGE 120V
OFF GRID SOLUTION**

**0 ms
transfer time**



LV-MK SOLAR INVERTER



TRUE DOUBLE CONVERSION

- ◆ AC-DC-AC conversion allows zero transfer time. No more interruption to sensitive load during switching



PARALLEL OPERATION

- ◆ No more worry about not having enough power. Maximum expansion up to 9 units!



POWER FLEXIBILITY

- ◆ Available in 1KW 12v, 2KW 24V, and 3KW 48v. Suitable for all types of application need



120/240V SPLIT PHASE

- ◆ Single unit output is 110/120V and split phase output can be achieved by using 2 units or more in parallel (parallel kit required; sold separately)



BIG CHARGING POWER

- ◆ Built-in MPPT solar charger max 80A
Utility charger max 60A



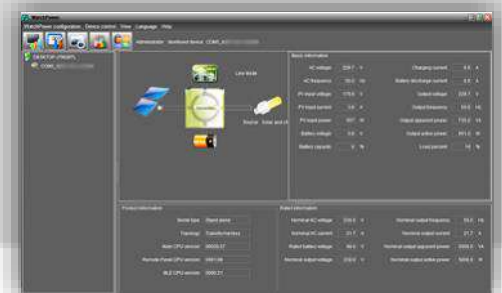
WIDE DC RANGE

- ◆ 10-16V (based on each 12v battery) means greater compatibility to wider range of battery types



WATCHPOWER

*FREE monitoring software available on PC, Mac, Linux 32bit / 64bit



WIFI BOX

Uploads inverter data to free Cloud service, accessible via browser on any device

*sold separately



PIP-LV-MK Series	1012LV-MK	2024LV-MK	3048LV-MK
ELECTRICAL SPECIFICATIONS			
Max Continuous Power	1000W	2000W	3000W
Parallel Capability	Yes, max up to 9 units		
Input Voltage Range	95-140 VAC		
Input/Output Frequency	50Hz/60hz Auto sensing		
Output Voltage	120VAC \pm 5%		
Output Waveform	Pure Sine Wave		
Peak Efficiency (line mode)	90%		
Peak Efficiency (ECO mode)	98%		
Peak Efficiency (battery mode)	88%	90%	92%
Nominal Battery Voltage	12V	24V	48V
Maximum Battery Voltage	16V	32V	64V
Transfer Time (AC Mode to Batt. Mode)	0 ms		
Transfer Time (Inverter to Bypass)	4 ms (Typical)		
Charging Mode	3-stage		
Max AC Charging Current	60A		
SOLAR CHARGER			
Algorithm	MPPT		
Max PV Input / Output	1000W	2000W	4000W
Max Charging Current	80A		
Max PV Input Voc	145V		
MPPT Range	15V-115V	30~115V	60~115V
ENVIRONMENTAL / MECHANICAL SPECIFICATIONS			
Communication Port	RS232, USB		
Operating/Storage Temp.	0°C ~ 55°C / -15°C ~ 60°C		
Operating Humidity	5% to 95% Relative Humidity(Non-condensing)		
Dimension	468*295*120mm		
Net Weight	10.5Kg	11.0Kg	11.5Kg